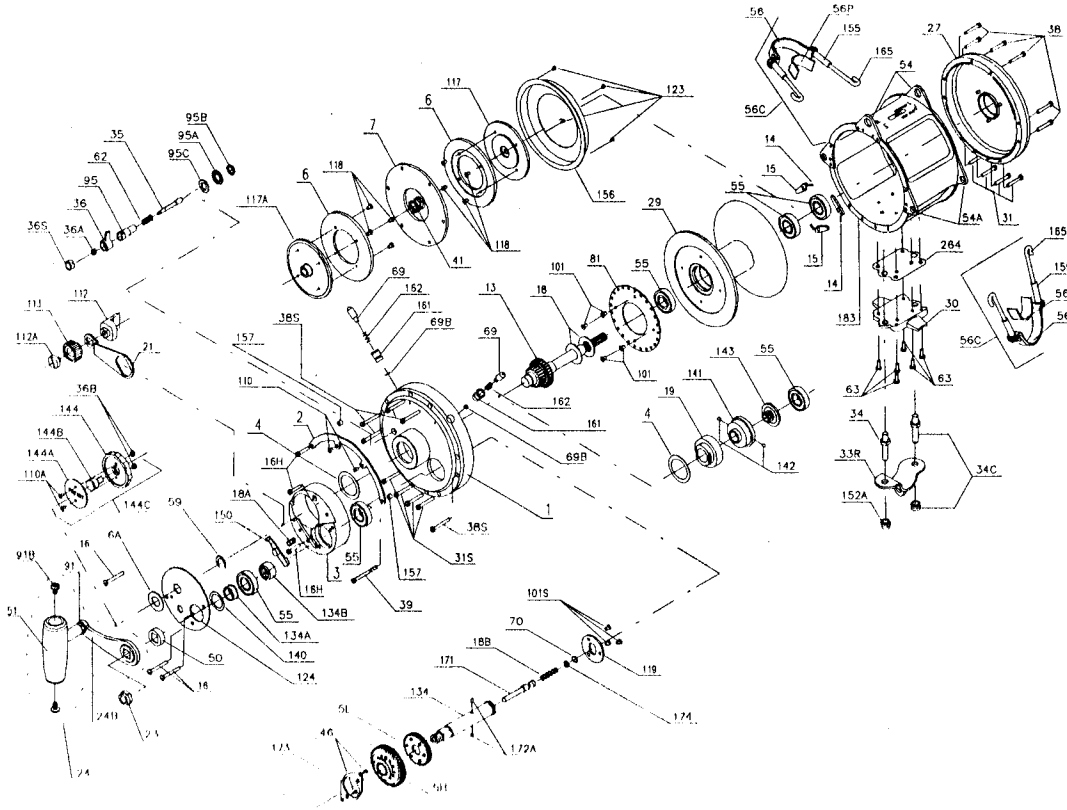




PARTS AND PRICE LIST FOR MODEL 130ST



Key No.	Part No.	Description	Price	Key No.	Part No.	Description	Price
1	001 130ST	R.S. Plate Assembly	\$144.00	63	063 030T	Stand Screw (6 req.)	\$.80
2	002 130	Quadrant Ring	14.00	69	069 130	Locating Pin (2 req.)	1.80
3	003 130ST	Bridge	27.00	69B	069B130	Retaining Ring (2 req.)	.80
4	004 130	Cam Thrust Washer (2 req.)	1.25	70	069B130S	Retaining Ring	1.35
5H	005 130HS	Main Gear High Speed	33.00	81	081 130	Ratchet	9.35
5L	005 130LS	Main Gear Low Speed	22.30	91	091 130ST	Handle Shaft	15.00
6	006A130	Drag Washer Assembly	15.25	91B	091B130ST	Handle Knob Screw	.75
6A	006 155	Drag Knob Spacer Washer	1.25	95	095 070	Click Tongue Bushing	3.50
7	007A130	Floating Drag Washer	20.00	95A	095A020	Click Bushing Washer	.65
13	013 130ST	Pinion Gear	62.50	95B	038 710	Click Bushing Nut	.50
14	049 710	Dog Spring (3 req.)	.50	95C	095A050	Click Bushing Washer	.65
15	015 130	Dog (3 req.)	1.50	101	101 030	Ratchet Screw (4 req.)	.45
16	016 130	Bridge Mounting Screw (3 req.)	.55	101S	101 130S	Coupling Plate Screw (3 req.)	.50
16H	016T130	Bridge Mounting Screw (Hidden) (3 req.)	.55	110	110T050	Quadrant Center Screw (2 req.)	.50
18	018 130	Disc Clutch Springs (2 req.)	1.70	110A	110 050	Preset Plate Screw (2 req.)	.50
18A	018 060	Preset Lock Spring	.45	112	112 130	Eccentric Lever Knob	27.00
18B	018 130S	Gear Stud Spring	.80	112A	112A130	Eccentric Knob Screw	3.75
19	019 130	Eccentric Cam	21.00	113	113 130	Eccentric Lever Cap	17.00
21	021 130ST	Eccentric Lever	10.35	117	117 130	Drive Plate (Outer)	30.00
23	023 130	Handle Nut	3.40	117A	117A130	Drive Plate (Inner)	18.50
24	024 130ST	Handle Complete	79.55	118	118 080S	Drive Plate Screw (8 req.)	.50
24B	024 130	Handle Blank (Only)	45.00	119	119 130S	Coupling Plate	2.35
27	027 130ST	L.S. Plate Assembly	119.50	123	123 050	Drag Cover Screw (4 req.)	.40
29	029L130	Spool	175.00	124	124 130ST	Bridge Cover	10.05
30	030 130ST	Stand	35.00	*	*125 130ST	Cam Housing	17.55
31	031T130	Stand Screws Left-Side (4 req.)	.65	134	134 130S	Gear Stud	21.00
31S	031T130S	Stand Screws Right-Side (4 req.)	.65	134A	134A130S	Indicator Bushing	3.70
33	033 130ST	Ringed Rod Clamp	21.00	134B	134B130S	Bearing Spacer Bushing	4.65
34	034 130ST	Clamp Screw (2 req.)	2.55	140	004 030	Thrust Washer	.95
34C	034C130ST	Rod Clamp Screw w/Nut	4.00	141	141 130ST	Cam Follower	10.35
35	035 130SN	Click Tongue	3.35	142	142 130	Cam Follower Pin (2 req.)	.75
36	036 050	Click Button	7.00	143	143 130ST	Adjusting Screw	9.30
36A	036 700	Click Button Nut	.90	144	144 130ST	Preset Knob	9.70
36B	036 700	Preset Knob Nut (2 req.)	.90	144A	144A130ST	Preset Knob Plate	2.75
36S	036S080ST	Click Button Cap	.85	144B	144B130ST	Preset Knob Insert	2.75
38	038T130	Post Screws Left-Side (6 req.)	.65	144C	144C130ST	Preset Knob Complete	17.00
38S	038T130S	Post Screws Right-Side (5 req.)	.70	150	150 130ST	Preset Lock Button	2.50
39	039T130S	Long Quadrant Screw	1.00	152A	152A080T	Acorn Nut	1.45
41	041 130	L.S. Bearing Spring	1.15	155	155 130	Turnbuckle	2.85
46	046A704	Gear Retaining Screw	.45	156	156 130	Drag Cover	7.75
50	050 130S	Shield	3.00	157	157 130	Quadrant Spacer Bushing (2 req.)	.90
51	051 130ST	Handle Knob Assembly	19.55	161	161 130	Locating Pin Bushing (2 req.)	1.60
54	054 130	Harness Lug (2 req.)	4.50	162	162 130	Locating Pin Spring (2 req.)	.50
54A	054A130	Rod Brace Lug (4 req.)	4.15	165	165 130	Hook Screw R.H.	2.25
55	055 130	Ball Bearing (6 req.)	18.50	171	171 130S	Plunger	3.70
56	056 130	Rod Brace	8.00	172A	172A130S	Plunger Pin (2 req.)	1.15
56C	056C130CN	Rod Brace Assembly (2 req.)	13.60	173	173 130S	Gear Retainer	2.35
56P	056P117	Rod Brace Pad	.50	174	174 130S	Gear Stud Plug	.75
59	059 130ST	Slotted Washer	.80	183	183 130ST	Frame	160.00
62	062 050	Click Spring	.80	264	264 130ST	Stand Gasket	2.25